

Sigma Contracting & Trading



SIGMA

CONTRACTING & TRADING W.L.L.
سيجما للمقاولات و التجارة ذ.م.م.



COMPANY PROFILE



Doha, Qatar

2024





TABLE OF CONTENTS

About Company	01
Vision & Mission	02
The company Value	03
ISO 9001:2015	04
Our Policy	05
Organization Chart	06
Our Services	07
Summary of Equipment's & Vehicles	08
Our Project	09
Contact Us	10





ABOUT COMPANY

Established in 2016, SIGMA Contracting and Trading WLL has become one of the Qatar's premier Building Contracting company with a range of prestigious commercial, retail and leisure properties.

We are offering construction services in terms of Site Analysis, Feasibility Studies, Preliminary Design Studies, Permit/Zoning Applications, etc. We handle various industrial, distribution, manufacturing, offices, retails, recreational, healthcare and commercial projects in State of Qatar.

SIGMA is a leader in providing value added construction services to our customers by creating a successful partnership with them throughout the construction process. Our pledge is to establish lasting relationships with our customers by exceeding their expectations and gaining their trust through exceptional performance by every member of the construction team.



VISION & MISSION

Vision

Our Vision is to be one of the top listed full solution Contracting Company in the State of Qatar as well as in the region and be the choice first class clients, providing them with integrated solutions and services of exceptional value in line with the global principles of sustainable development, responsible care and integrated management system.

Mission

Our goal is to be the premier Construction Contracting company in the State of Qatar as well as in the region and be of choice for first class clients, providing them with integrated solutions and services of exceptional value in line with the global principles of sustainable development, responsible care and integrated management system.

Our mission is to provide a world-class Construction & Contracting service exceeding clients & customer expectations through: Delivering superior value, flexible, firm, cost effective, and integrated construction engineering solutions & projects across our extensive fields of expertise. Maintaining the highest level of professionalism, integrity, honesty and fairness in conducting business and promoting good relationship with our partners, suppliers, sub-contractors and customers.

Raising environmental awareness and encouraging engagement in initiatives aimed at achieving a more sustainable society.



CORE VALUES



ETHICS

We strictly follow set of behavioral rules reflected in all our business dealings. We consider Values, Principles, Management Support, Personal Responsibility and Compliance as the key components of a Code of Ethics.



RESPECT

Mutual respect is the cornerstone in every relationship. We promote this internally and externally because these relationships fuel our business.



HONESTY

We value honesty because honest business practices build foundations of trust with colleagues, competitors, partners, customers and every other individual and entity.



SAFETY

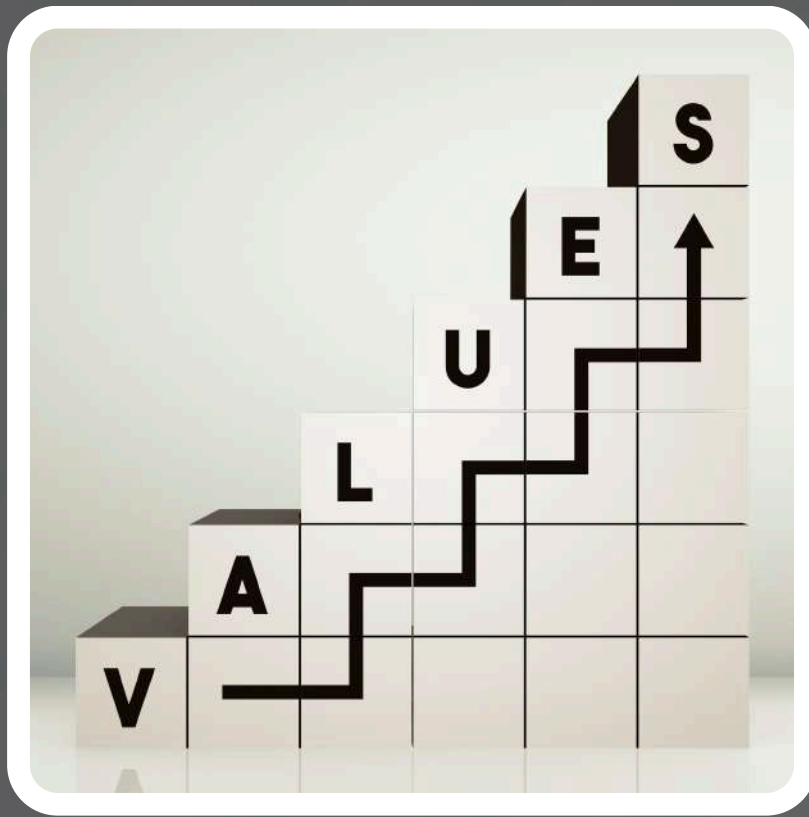
Zero accident is our unwavering goal. We are continually working on actions and initiatives to lower incident rates, as well as focusing on maintaining zero incident levels, where this has been achieved.



INTEGRITY

Our business relationships are built on trust and we are heartily concerned with our reputation.

We inextricably connected trust and reputation in building our integrity.



SUSTAINABILITY

We look forward for sustainable development that aims to balance our economic, environmental and social needs, allowing prosperity for now and future generations.



TEAM SPIRITS

Nothing is achievable without the right team of team spirit. We take pride in our team and their expertise & strengths and we sustain the strive to achieve our goals and beyond respecting of integrating of catering to their technique and or personal development that grows as we grow.



EXCELLENCE

We excel in construction with careful planning and precise execution, delivering high-quality results that surpass industry standards. Our commitment to quality and innovation distinguishes us as a trusted leader in the field.



PROGRESSIVE

Progressive thinking drives our construction approach, emphasizing innovation and forward-looking solutions that set new industry standards. We're committed to excellence, delivering high-quality results that exceed expectations and inspire confidence in our clients.

ISO 9001:2015

Certificate of Registration



This is to Certify That The Quality Management System of

SIGMA CONTRACTING AND TRADING WLL

P.O. BOX 17326, DOHA - QATAR

has been audited and conformed to be in accordance with the requirements of

ISO 9001:2015

The Quality Management System is Applicable to :

**CONSTRUCTION & GENERAL CONTRACTING
TRADING OF BUILDING MATERIALS**

Certificate No	: QDA141022	
Initial Registration Date	: 12/10/2022	Issuance Date : 12/10/2022
Date of Expiry	: 11/10/2025	
1st Surve. Due	: 12/09/2023	2nd Surve. Due : 12/09/2024


Director



ACCREDITED
Management Systems
Certification Body
MSCB-174



Aambitious Assessment Pvt. Ltd.

D-9, Sector 03, Noida, Gautam Buddha Nagar, Uttar Pradesh - 201301, India.

e-mail: info@aapcertification.in, website: www.aapcertification.in

Certificate Verification: Certificate Validity can be re-checked at www.aapcertification.in

This certificate is a property of Aambitious Assessment Pvt. Ltd. and shall be returned immediately when demanded

*Validity of the certificate is subject to successful completion of surveillance audit on or before due date



01

ISO 9001 - Quality
management system

ISO 14001 - Environmental
management system

02

03

ISO 45001- occupational
health and safety (OH&S)
management system.

ISO 22301 -Business
continuity management
system

04

OUR POLICIES



Integrated Management System

Doc. No. SCT-IMS-POL-00

Rev.:00

Effective Date:

IMS Policy

Sigma Contracting and Trading is committed to the highest standards of excellence across all aspects of our operations. Our Integrated Management System (IMS) Policy reflects our dedication to seamlessly integrating quality, health and safety, environmental, and business continuity management into every characteristic of our organization. We commit to following the guidelines stated in our respective policies. By doing so, we promise to:

- Prioritize the well-being of our employees, customers, and stakeholders by fostering a culture of safety, health, and environmental stewardship in all our endeavors.
- Our goal is to consistently deliver high-quality work, while continuously improving our processes and adhering to strict standards.
- Ensure compliance with all applicable laws, regulations, and industry best practices, while maintaining our commitment to ethical conduct and corporate responsibility.
- Promote sustainable practices that minimize our environmental footprint and contribute to a sustainable future for generations to come.
- Proactively identify and manage risks to ensure the continuity of our business operations, protect our assets and maintaining our commitment to delivering on our promises.

Through the implementation of our Integrated Management System, we strive to achieve operational excellence, exceed customer expectations, and drive sustainable growth while upholding our core values of integrity, professionalism, and accountability.

General Manager

Printed documents are considered uncontrolled. To ensure you are working with current version always refer to the pdf version

CONTROLLED COPY



Quality Policy

Sigma Contracting and Trading is dedicated to delivering excellence in all kind of projects. Our commitment to quality is integral to our mission, and we strive to exceed client expectations while adhering to the highest industry standards. Our Quality Policy is founded on the following principles:

- We prioritize client satisfaction by understanding and fulfilling their requirements, expectations, and project objectives. Through effective communication and collaboration, we aim to build lasting relationships based on trust and mutual success.
- We are unwavering in our adherence to local and international construction standards, regulations, and legal requirements. Our projects are executed with precision and in compliance with industry best practices, ensuring the safety, integrity, and sustainability of our structures.
- We promote a culture of continuous improvement, encouraging innovation, learning, and adaptation. By regularly reviewing our processes and performance, we identify opportunities for enhancement, ensuring that our projects are delivered efficiently and with the latest advancements in construction technology.
- Our success is driven by the expertise and dedication of our workforce. We invest in the development and training of our employees, ensuring they possess the necessary skills and knowledge to deliver projects to the highest quality standards. We value teamwork and collaboration to achieve common goals.
- Proactive risk management is integral to our quality assurance process. We identify, assess, and mitigate risks to prevent disruptions and ensure the successful completion of projects. Our approach is grounded in foresight, resilience, and a commitment to project delivery timelines.
- Open and transparent communication is fundamental to our quality assurance framework. We engage with all stakeholders, including clients, suppliers, and regulatory bodies, to foster a shared understanding of project requirements and expectations.
- We maintain a Quality Management System that aligns with industry standards and supports the systematic planning, execution, monitoring, and improvement of our construction projects. Regular audits and assessments ensure the effectiveness of our quality processes.

General Manager

Printed documents are considered uncontrolled. To ensure you are working with current version always refer to the pdf version

CONTROLLED COPY

Business Continuity Policy

Sigma Contracting and Trading is committed to the uninterrupted operation of its critical business functions, ensuring the continued delivery of products and services to our customers, partners, and stakeholders.

This commitment is embodied in this Business Continuity Policy, which adheres to the principles of ISO 22501:2019. Our policy prioritizes the safety and well-being of our employees while minimizing disruptions and maximizing recovery in the event of any potential threats or incidents. We achieve this through:

- **Proactive identification and assessment of risks:** We continuously evaluate internal and external threats that could impact our operations.
- **Development and implementation of comprehensive Business Continuity Plans (BCPs):** These plans outline specific strategies and procedures for restoring critical functions within established timeframes.
- **Allocation of necessary resources:** We dedicate personnel, equipment, facilities, and budget to support BCP implementation and maintenance.
- **Regular testing and training:** We routinely test our BCPs through simulations and exercises to ensure their effectiveness and prepare our personnel for incident response.
- **Continuous improvement:** We actively gather feedback and lessons learned from tests, exercises, and actual incidents to refine and enhance our BCPs.

This policy serves as a testament to Sigma Contracting and Trading's unwavering commitment to operational resilience and our determination to deliver on our promises, even in the face of unforeseen challenges.

We recognize that business continuity is an ongoing process, and we are dedicated to continuous improvement to ensure the sustainability of our operations and the well-being of our employees and stakeholders.

General Manager

Printed documents are considered uncontrolled. To ensure you are working with current version always refer to the pdf version

CONTROLLED COPY

Health and Safety Policy

Sigma Contracting and Trading is dedicated to ensuring the highest health, safety, and welfare of our employees and all individuals impacted by our operations. It is our unwavering priority to cultivate a safe and healthy work and living environment within our premises. To uphold this commitment, management pledges to:

- Take decisive action to not only meet but exceed our health and safety targets, and encourage a culture of continuous improvement within our organization.
- Prioritize the safety and welfare of our workers while safeguarding our valuable assets through proactive measures and strong protocols.
- Adhere rigorously to all relevant health and safety laws, regulations, and industry standards, demonstrating our unwavering commitment to compliance.
- Systematically identify and mitigate risks, striving to eliminate hazards and minimize potential harm to all stakeholders.
- Regularly review and refine our health and safety management system, ensuring its ongoing suitability, adequacy, and effectiveness.
- Pursue relentless improvement in our health and safety performance, setting ambitious goals and holding ourselves accountable for achieving them.
- Work tirelessly to prevent accidents and incidents of work-related ill-health, instilling a culture of vigilance and responsibility among all team members.
- Embrace a top-down approach to management commitment, with leadership fully dedicated to upholding and championing our health and safety management system.

Through these persistent commitments, Sigma Contracting and Trading strives to nurture a workplace environment where every individual can thrive safely and confidently.

General Manager

Printed documents are considered uncontrolled. To ensure you are working with current version always refer to the pdf version

CONTROLLED COPY

Environment Policy

Sigma Contracting and Trading is committed to environmental protection and full compliance with all applicable legal and regulatory requirements pertinent to our business operations. Our main goal is to conduct our activities in a manner that is not only environmentally sustainable but also economically feasible while minimizing adverse impacts on the environment. To uphold this commitment, management pledges to:

- Cultivate a culture of environmental consciousness and responsibility among all stakeholders, including employees, subcontractors, vendors, customers, and visitors, through comprehensive training initiatives.
- Conduct thorough assessments to identify and comprehend the environmental impacts associated with our project activities, and diligently adopt practical measures to mitigate these impacts wherever feasible.
- Adhere strictly to our waste management plan, ensuring proper waste segregation and disposal practices are in place to uphold environmental integrity.
- Regularly monitor and assess key environmental parameters, facilitating the continual evaluation and improvement of our environmental performance.
- Continuously review and refine the adequacy and effectiveness of our Environmental Management System, instigating necessary enhancements to ensure sustained operational excellence.
- Pursue a path of continuous improvement in our environmental management practices, setting ambitious targets and actively pursuing innovative solutions to further reduce our environmental footprint.
- Proactively mitigate the risks of accidents and incidents related to environmental hazards, recognizing the intrinsic link between environmental protection and the health and safety of our workforce.
- Demonstrate unwavering management commitment to the principles and objectives of our Environmental Management System, serving as champions of environmental stewardship and inspiring collective action.

Through these resolute commitments, Sigma Contracting and Trading reaffirms its unwavering dedication to environmental preservation and sustainable business practices, ensuring a greener and more sustainable future for generations to come.

General Manager

Printed documents are considered uncontrolled. To ensure you are working with current version always refer to the pdf version

CONTROLLED COPY

ORGANIZATIONAL STRUCTURE

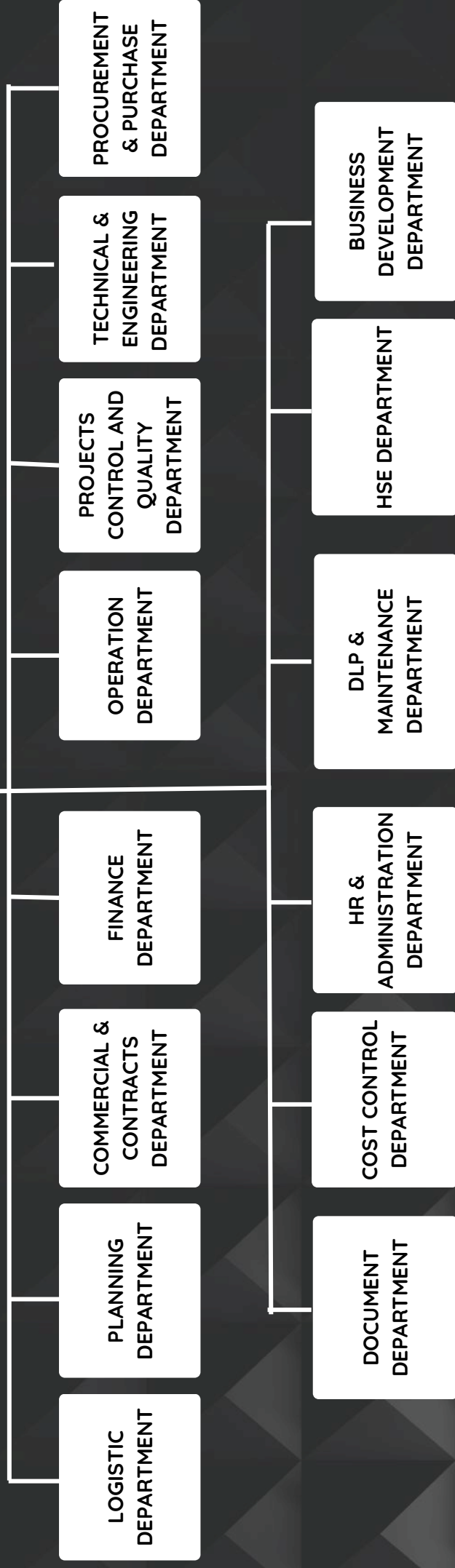
At Sigma, our diverse team members, each with unique backgrounds and roles, are united by a shared motivation. Together, we engage in stimulating conversations about the future of our industry and company, driven by a common passion. Emphasizing long-term visions rather than short-term strategies, we foster a culture of goal-oriented behavior throughout the team.

From entry-level positions to senior positions, our mutual regard opens up new channels of communication, generating strong morale, passion, and loyalty. The strong bonds between employees and management drive us to provide exceptional customer service, rooted in our internal people policy.





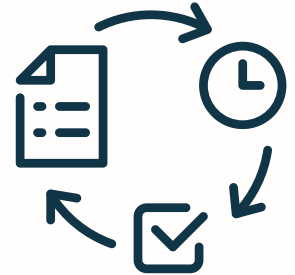
GM



CONSTRUCTION PROJECT MANAGEMENT

Pre-Construction

The pre-construction phase is vital for project success, requiring clear goals and expert management. Sigma offers services like site assessments, budget control, schedules, value engineering, and procurement support to ensure project feasibility and profitability.



Construction Management

Construction management ensures accountability and early issue resolution in projects. Sigma's approach focuses on transparency, honesty, and beneficial relationships, aiming for on-time, on-budget, and legally compliant project completion. Services include collaboration with stakeholders, efficient review processes, quality site supervision, vendor coordination, timely meeting minutes, and quality assurance inspections.



Client Care

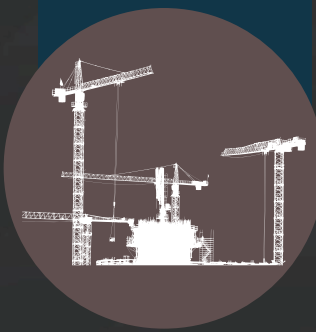
Construction projects face common challenges like undefined objectives, budget constraints, and time management. Sigma's Client Care team addresses concerns about quick-closeout procedures, best practices, and post-move-in support to ensure optimal efficiency. Their services include warranty reviews, project commissioning, deficiency reports, permit closure, and compiling project closeout documents for a comprehensive operational record.



OUR SERVICES



Excavation Works



Civil Works



**High-End
Finishing**



**Landscape
Works**



Green Building



HVAC Works



**Electrical
Works**



**Fire Fighting
Works**



Plumbing Works

OUR CAPABILITIES



ESTABLISHMENT

2016*



Established in 2016, SIGMA Contracting and Trading WLL has become one of the Qatar's premier Building Contracting company with a range of prestigious commercial, retail and leisure properties. W

EMPLOYEE NUMBER

1726*

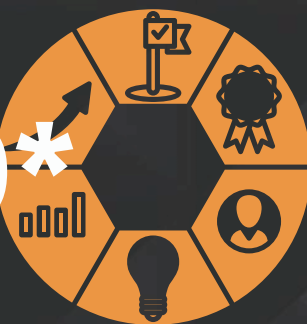


APPROX.

Aiming to solve social issues, every one of our staff in Qatar and abroad continues to take up the challenge and play an active role. We are continually striving to discover and develop professional talent.

RUNNING PROJECTS

30*



In our company profile, we showcase our ongoing projects, demonstrating our commitment to delivering excellence through meticulous planning, expert execution, and timely completion, all aimed at exceeding client expectations.

EQUIPMENTS AND VEHICLES

167*



In our company profile, we highlight our extensive fleet of modern equipment and vehicles, meticulously maintained to ensure optimal performance and efficiency in meeting our clients' needs.

SUMMARY

EQUIPMENTS & VEHICLES



Equipment Type	Total Quantity
Excavator	17



Equipment Type	Total Quantity
Mini Excavator	1



Equipment Type	Total Quantity
Telehandler	16



Equipment Type	Total Quantity
Wheel Loader	4



Vehicle Type	Total Quantity
Big Bus (62S :67S)	19



Equipment Type	Total Quantity
Mobile Crane	6



Equipment Type	Total Quantity
Boom Truck 7 Ton	1



Vehicle Type	Total Quantity
Trailer Head	13



Vehicle Type	Total Quantity
Trailer Box	9



Vehicle Type	Total Quantity
Flat Bed	5



Vehicle Type	Total Quantity
	2



Equipment Type	Total Quantity
Backhoe Loader	3



Vehicle Type	Total Quantity
Pickup 3/4 Ton	11



Equipment Type	Total Quantity
Skid Loader	15



Equipment Type	Total Quantity
Skid Steer Loader	1



Equipment Type	Total Quantity
Fork Lift 3.5 ton	4



Equipment Type	Total Quantity
Roller 3 Ton	1



Equipment Type	Total Quantity
Roller 10 Ton	2



Equipment Type	Total Quantity
Mini Dumper 3-Ton	1



Vehicle Type	Total Quantity
Sweet Water Tanker	6



Vehicle Type	Total Quantity
Sewage Water Tanker	2



Vehicle Type	Total Quantity
Tipper Truck	4



Vehicle Type	Total Quantity
Pick-up Double Cabin	9



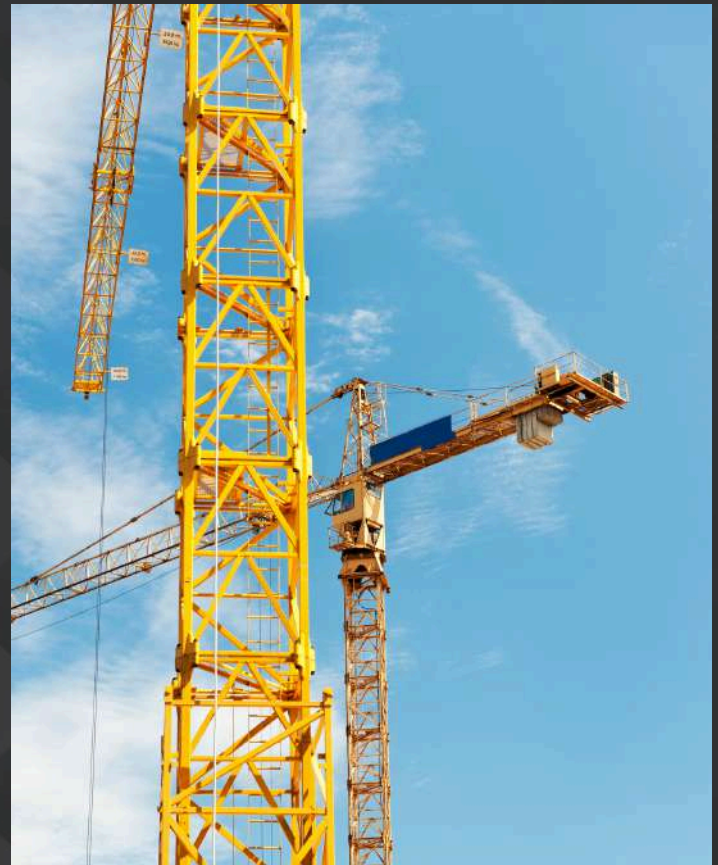
Vehicle Type	Total Quantity
Light Motor Vehicles	15

Vehicle & Equipment Type

TOTAL QUANTITY

TOTAL

167



DESCRIPTION

QTY

TOWER CRANE

15

CONSTRUCTION
PASSENGER HOIST

6

CRADLES

14

PLACING BOOM

8

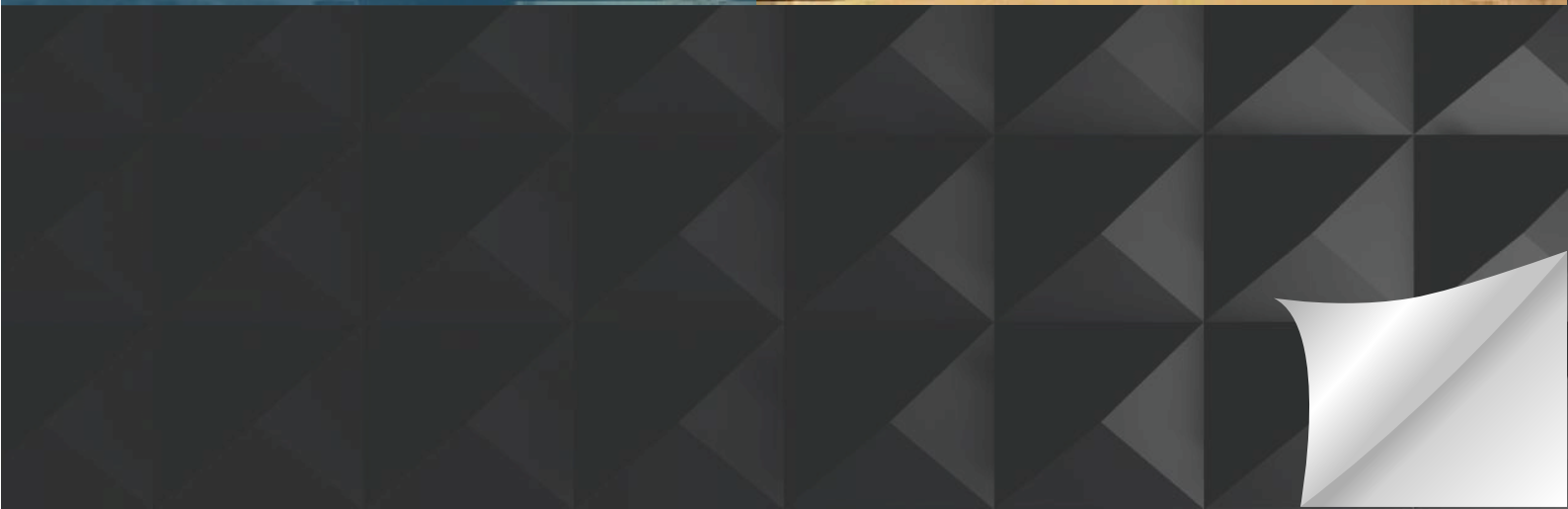
STATIONARY PUMP

4





OUR PROJECTS



SKALA TOWER

LUSAIL WATER FRONT

203
Million QR

Total Build Up Area

50,050 Sqm.

Plot Area

10,000 Sqm.





LUSAIL WATER FRONT, QATAR



LUSAIL WATER FRONT, QATAR

LUSAIL MARINA

LUSAIL

102
Million QR

Total Build Up Area
37,442 Sqm.

Plot Area
5,533 Sqm.





LUSAIL MARINA , DOHA QATAR



LUSAIL MARINA, DOHA QATAR

MILOS TOWER

LEGTAIFIYA- (SKELETON PACKAGE)

1B +G+UG+2P+13+T+R

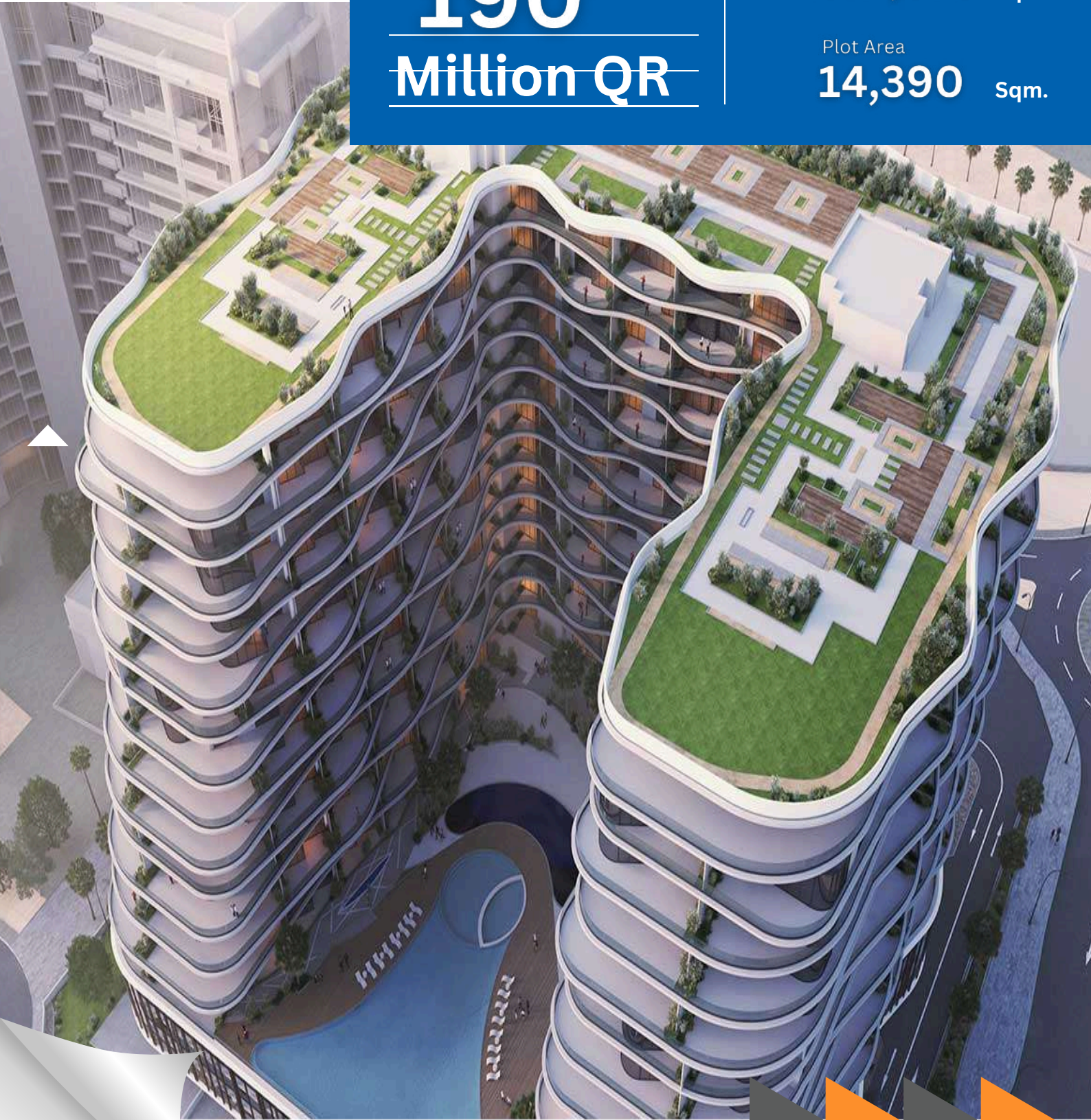
190
Million QR

Total Build Up Area

125,376 Sqm.

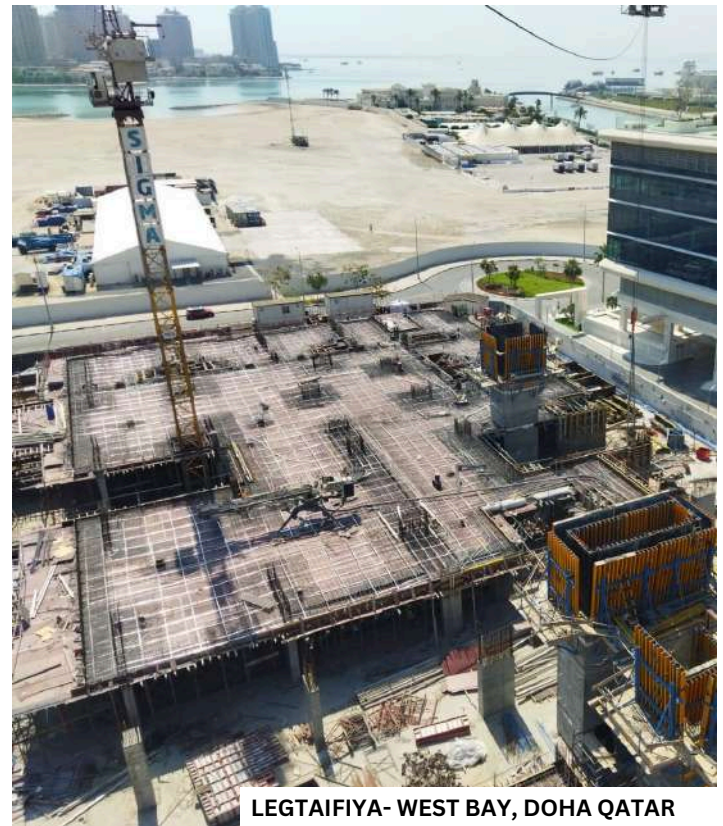
Plot Area

14,390 Sqm.





LEGTAFIYA- WEST BAY, DOHA, QATAR



LEGTAFIYA- WEST BAY, DOHA QATAR

LAMER TOWER

LUSAIL WATER FRONT - (SKELETON PACKAGE)

131
Million QR

Total Build Up Area
53,070 Sqm.

Plot Area
55,574 Sqm.





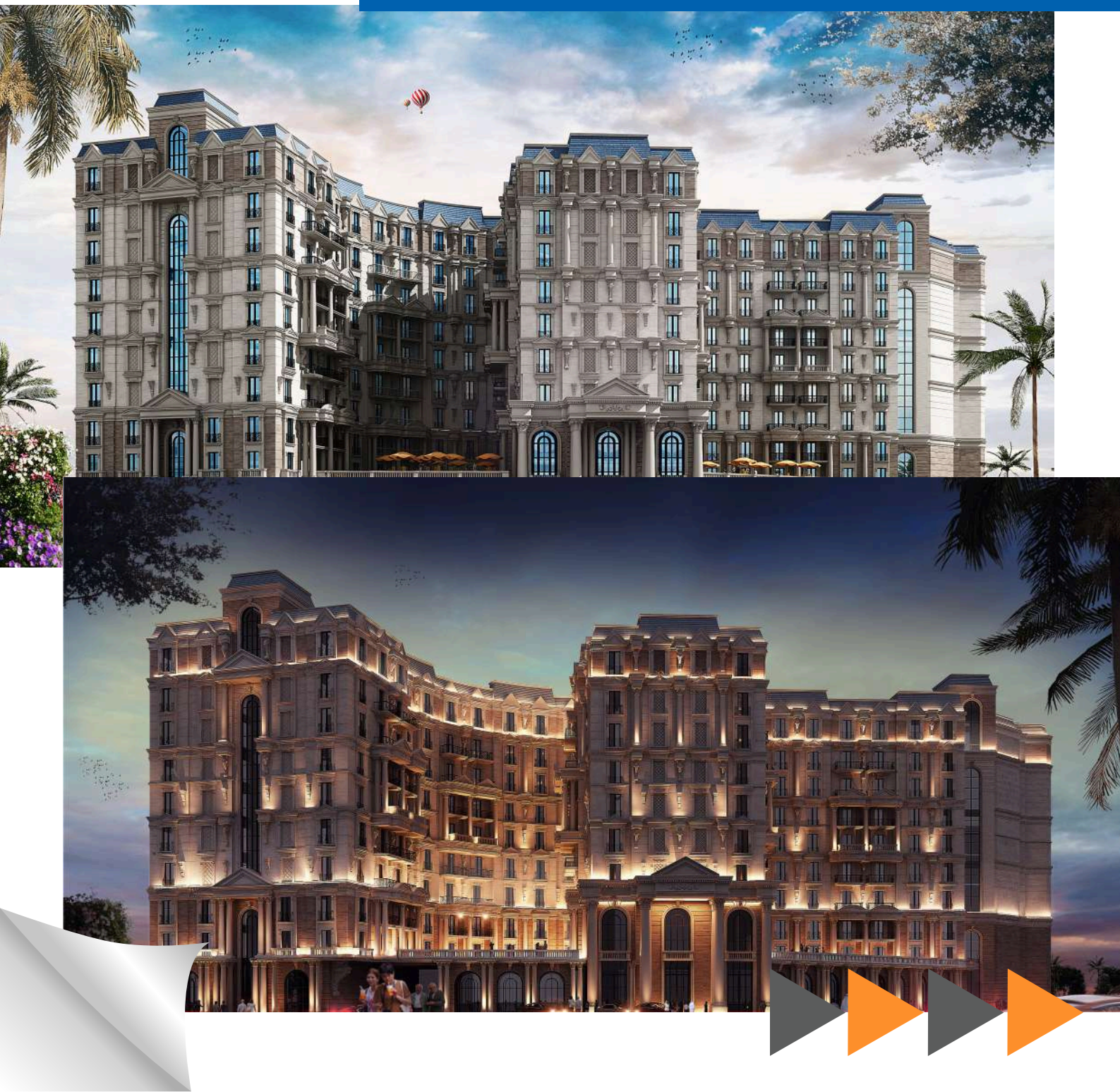
LA VERDE- RESIDENTIAL BUILDING

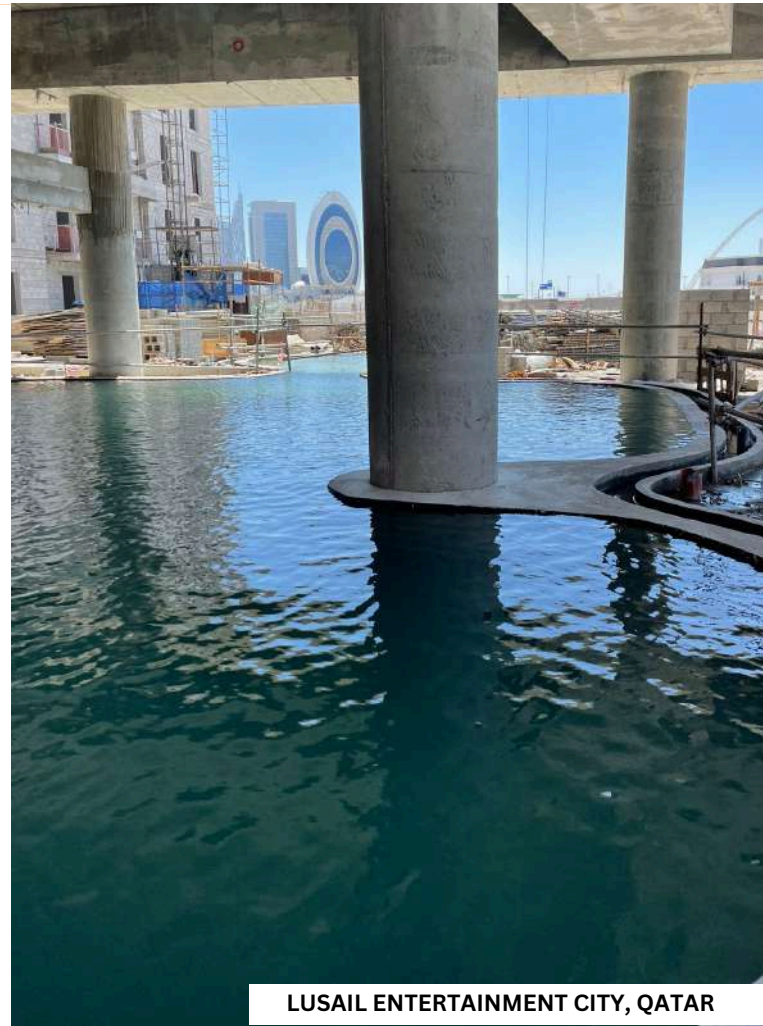
LUSAIL, YASMEEN DISTRICT

142
Million QR

Total Build Up Area
43,000 Sqm.

Plot Area
6,096 Sqm.





LUSAIL ENTERTAINMENT CITY, QATAR



LUSAIL ENTERTAINMENT CITY, QATAR

AL THUMAMA COMPLEX - (30 nos. of Residential Buildings)

AL THUMAMA, QATAR

280
Million QR

Total Build Up Area
115,000 Sqm.

Plot Area
66,827 Sqm.



AL THUMAMA COMPLEX - (30 nos. of Residential Buildings)

AL THUMAMA, QATAR

280
Million QR

Total Build Up Area
115,000 Sqm.

Plot Area
66,827 Sqm.





AL THUMAMA, QATAR



AL THUMAMA, QATAR

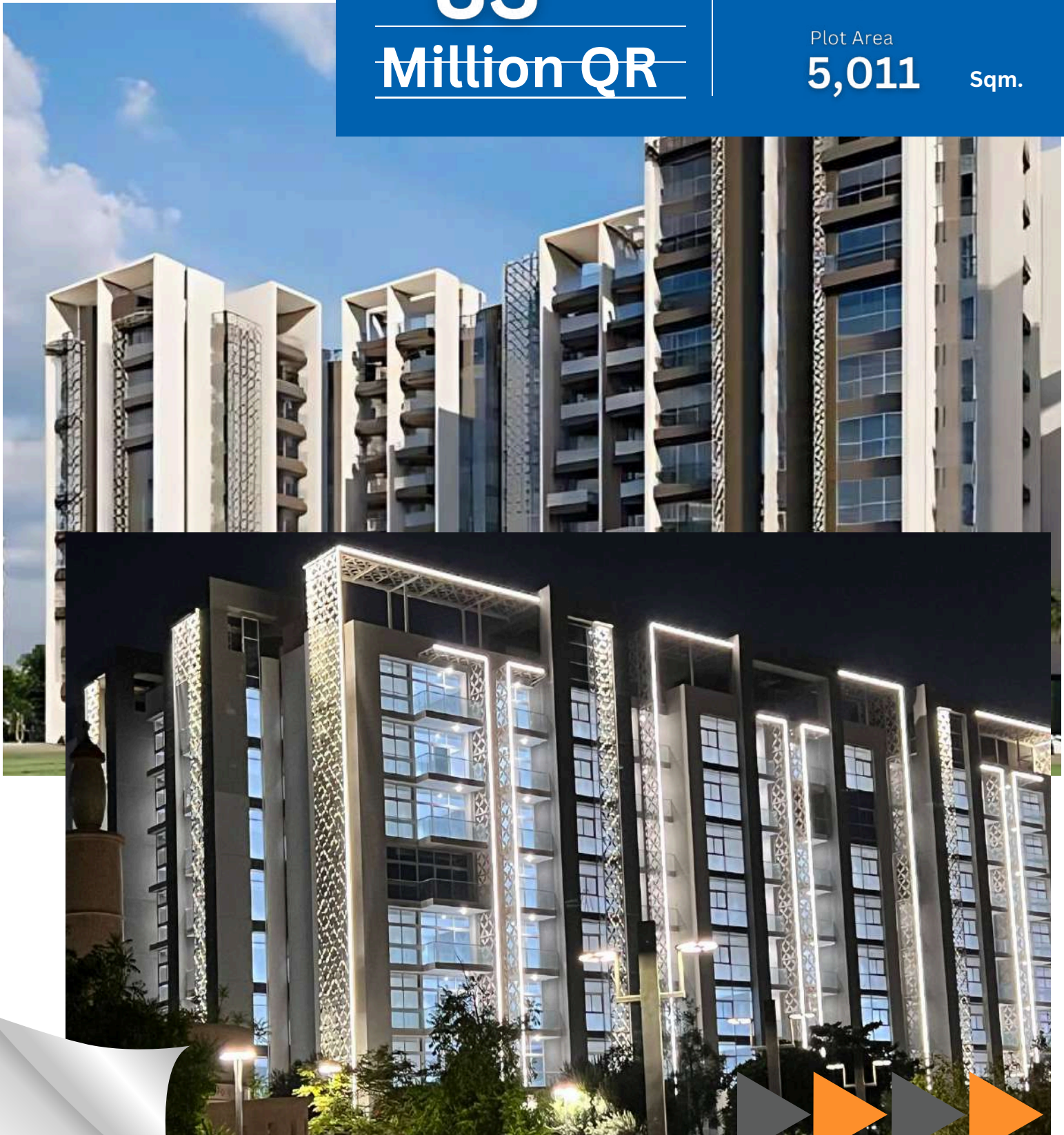
THE CRESCENT 1

LUSAIL, YASMEEN DISTRICT

83
Million QR

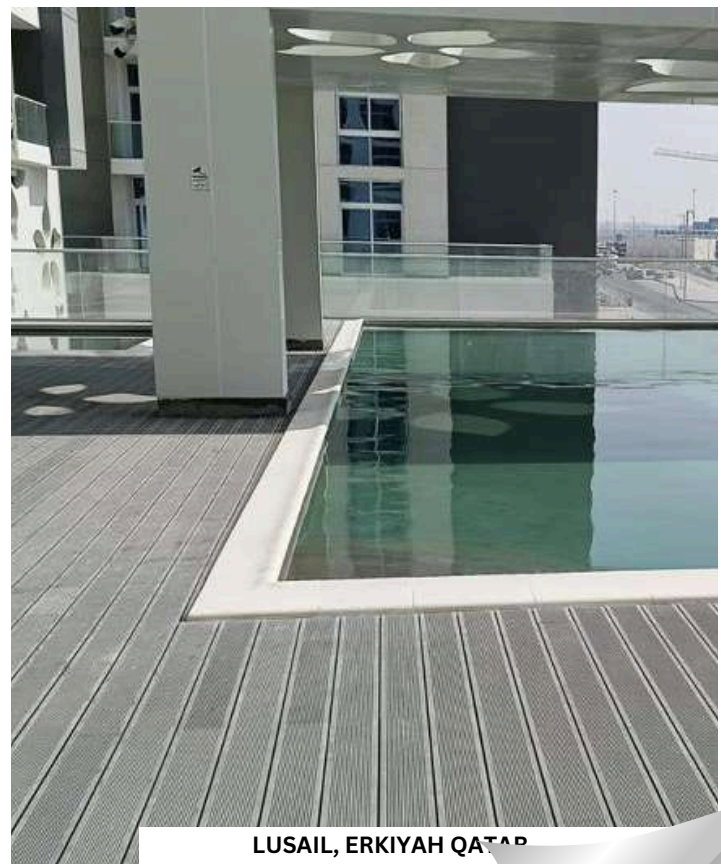
Total Build Up Area
31,508 Sqm.

Plot Area
5,011 Sqm.





LUSAIL, ERKIYAH QATAR



LUSAIL, ERKIYAH QATAR

Bayti Complex

LUSAIL, YASMEEN DISTRICT

180.5
Million QR

Total Build Up Area
78,159 Sqm.

Plot Area
12,959 Sqm.





LUSAIL, YASMEEN DISTRICT, QATAR



LUSAIL, YASMEEN DISTRICT, QATAR

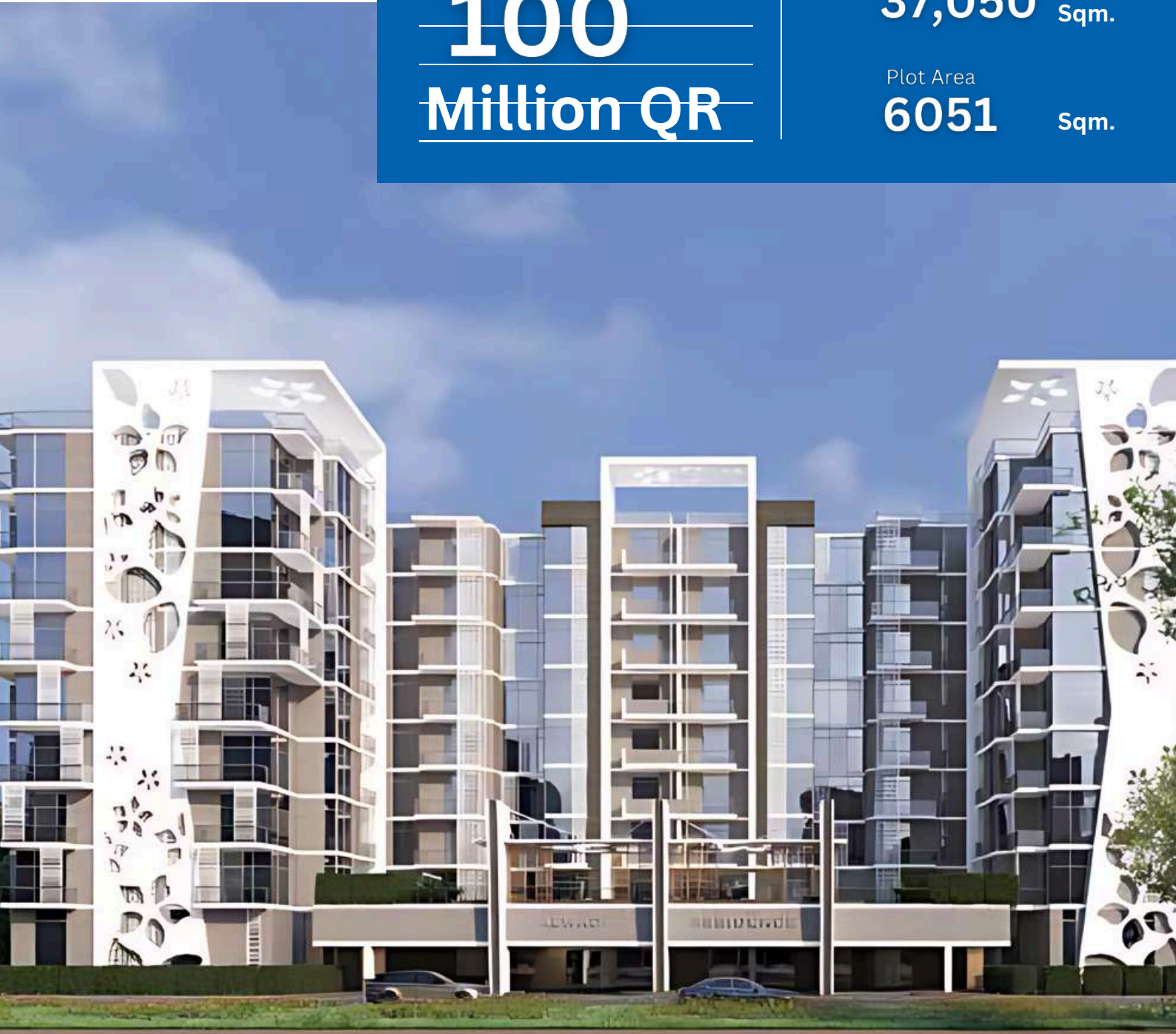
AL WADI 1 RESIDENTIAL BUILDING (2B+G+8+R)

LUSAIL, YASMEEN DISTRICT

100
Million QR

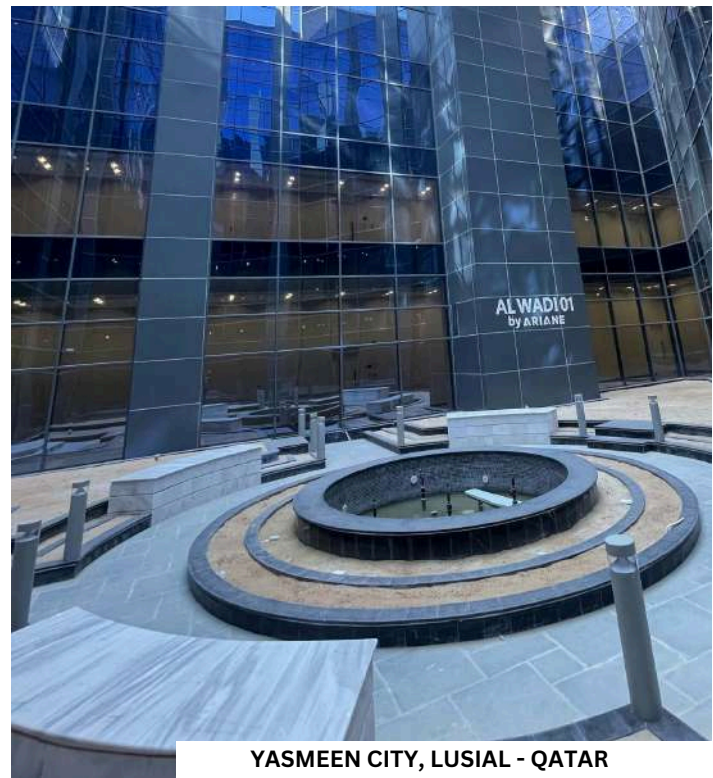
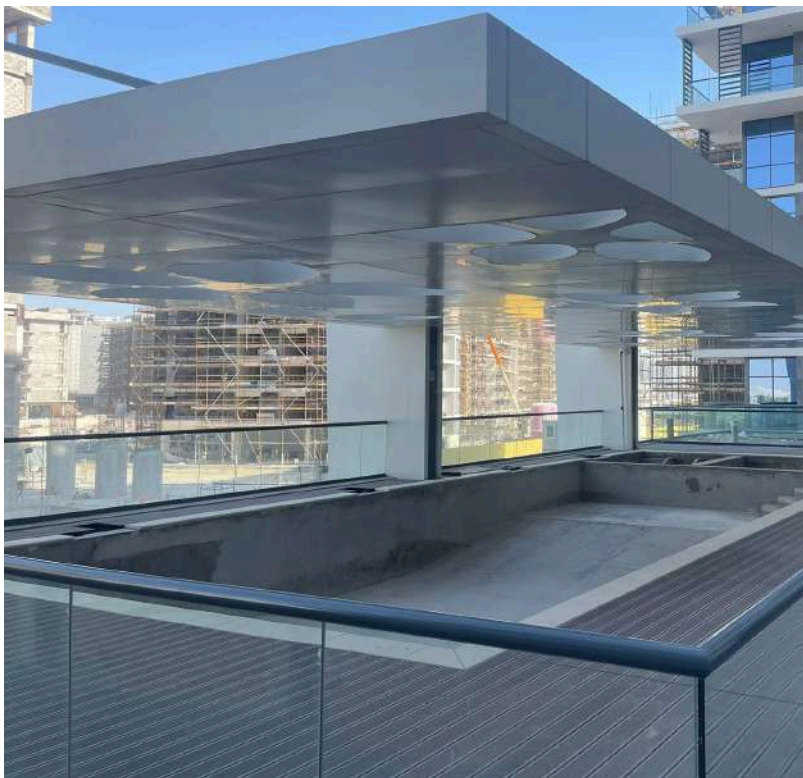
Total Build Up Area
37,050 Sqm.

Plot Area
6051 Sqm.





YASMEEN CITY, LUSAIL - QATAR



YASMEEN CITY, LUSAIL - QATAR

AL WADI 2 RESIDENTIAL BUILDING (2B+G+8+R)

LUSAIL, YASMEEN DISTRICT

34
Million QR

Total Build Up Area
11981 Sqm.

Plot Area
1961 Sqm.





YASMEEN CITY, LUSIAL - QATAR



YASMEEN CITY, LUSIAL - QATAR

MU05, MU06, MU07 BUILDINGS PACKAGE

LUSAIL, YASMEEN DISTRICT

168
Million QR

Total Build Up Area
36,767 Sqm.

Plot Area
7,915 Sqm.





LUSAIL, YASMEEN DISTRICT, QATAR



LUSAIL, YASMEEN DISTRICT, QATAR

THE GARDEN VILLAS - 133 VILLAS

THUMAMA

131
Million QR

Total Build Up Area
53,070 Sqm.

Plot Area
55,574 Sqm.





AL THUMAMA, QATAR



AL THUMAMA, QATAR





PARTNER COMPANIES

- **SUBSIDIARY COMPANY TO ARIANE HOLDINGS**



- **SISTER COMPANY TO :**

1. Ariane Real State



2. KBR Qatar Trading & Contracting



3. DSI - Post Tensioning Specialists

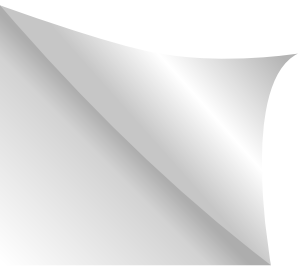


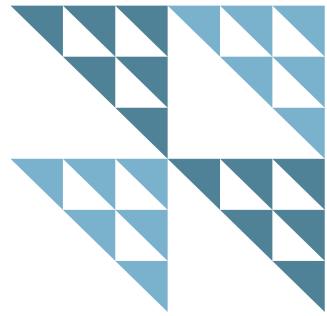
4. Anion- MEP work Specialists



5. Al Andalus Factory







NOTES:



CONTACT INFORMATION

Let's Connect
With Us!



+974 4480 2390



info@sigmactc.com



<https://sigmactc.com>



5th Floor, Flat No 4 ,13 Zone, 980
Street Ariane Tower, Msheireb
P.O BOX : 17326
Doha – Qatar



“Building not just structures, but relationships founded on trust,
transparency, and mutual success.”





ABOUT COMPANY

Established in 2016, SIGMA Contracting and Trading WLL has become one of the Qatar's premier Building Contracting company with a range of prestigious commercial, retail and leisure properties.

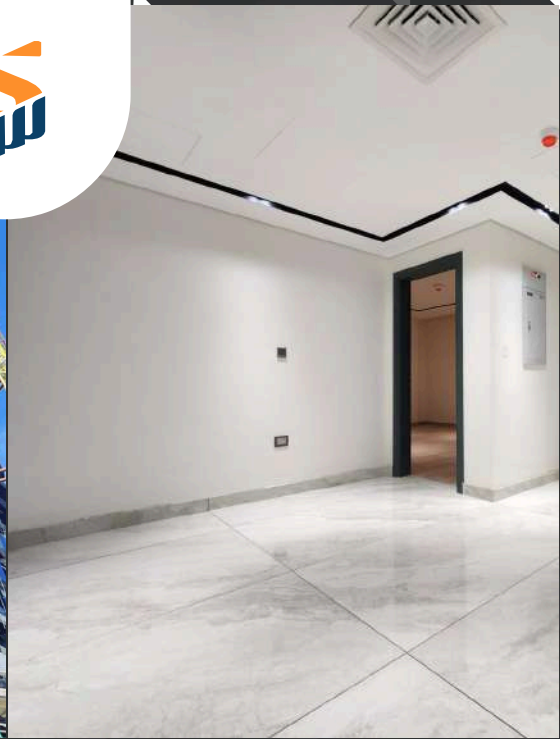
We are offering construction services in terms of Site Analysis, Feasibility Studies, Preliminary Design Studies, Permit/Zoning Applications, etc. We handle various industrial, distribution, manufacturing, offices, retails, recreational, healthcare and commercial projects in State of Qatar.

SIGMA is a leader in providing value added construction services to our customers by creating a successful partnership with them throughout the construction process. Our pledge is to establish lasting relationships with our customers by exceeding their expectations and gaining their trust through exceptional performance by every member of the construction team.

Established 20 years ago, Sigma Contracting and Trading WLL has become one of the Qatar's premier Building Contracting company with a range of prestigious commercial, retail and leisure properties.







Complex

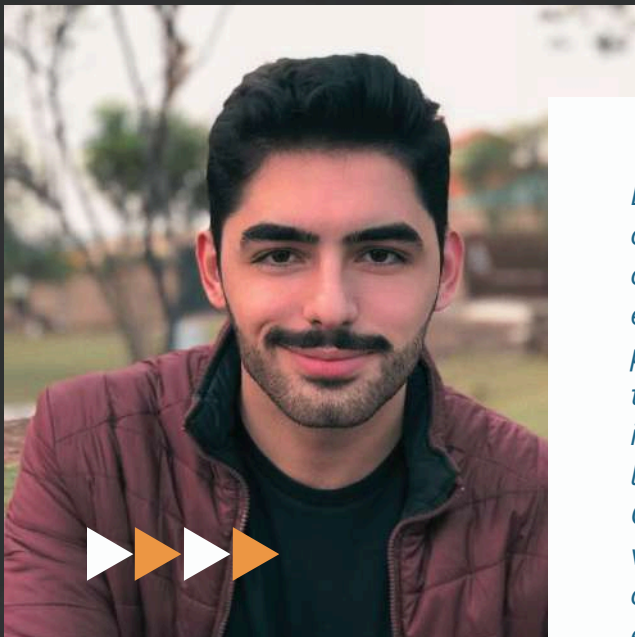
Construction

Interior



“Building your own home is about desire, fantasy. But it’s achievable anyone can do it.”

CLIENT FEEDBACK



Lorem ipsum dolor sit amet, consectetur adipiscing elit. Proin condimentum nunc ac aliquam eleifend. Nulla vel dui a sem pretium commodo. Curabitur eu tellus non libero aliquet fringilla in sit amet est. Cras egestas lorem vitae rhoncus tristique. Quisque hendrerit lacinia ante vitae auctor. Maecenas at condimentum libero. Cras varius eu neque a pharetra.

Benjamin Shah

Lorem ipsum dolor sit amet, consectetur adipiscing elit. Proin condimentum nunc ac aliquam eleifend. Nulla vel dui a sem pretium commodo. Curabitur eu tellus non libero aliquet fringilla in sit amet est. Cras egestas lorem vitae rhoncus tristique. Quisque hendrerit lacinia ante vitae auctor. Maecenas at condimentum libero. Cras varius eu neque a pharetra.

Samira Hadid

